

Muslim Women's Council Strategy 2019 onwards



Muslim Women's Council (MWC) was founded in 2009 by a small group of Muslim women who had experienced significant barriers to life in the UK as Muslim women. Since then our aim has been to address the barriers encountered by Muslim women and their families from Bradford and surrounding areas; supporting them in playing a full and active role in society and the economy.

Vision and Mission

We are led by the needs of Muslim women and our mission is to **'empower women for the benefit of society'**. We believe when women are empowered this benefits the whole of society, and that women are an effective force for social change.

Values

Our values reflect the vision and mission we have set:

- We are for all women with a particular focus on issues affecting Muslim women
- We support equality, diversity and social justice for all
- We are inclusive of all communities and people of all faiths and none
- We will continue to be challenging and advocate for the issues that matter to Muslim women and communities
- We are independent and speak truth to power
- We are entrepreneurial
- We are open, transparent and share our work and learning
- We value and support our staff and volunteers and embrace cultural, religious and all other difference
- We know we cannot achieve our aims alone and value partnerships with others who share our vision and values

Our strategy builds on what we have achieved so far and to continue offering effective ways of meeting the needs of Muslim women in Bradford and beyond.

We aim to expand our reach and impact, this means using all our experience, insight and innovation to help break down barriers preventing Muslim women from fulfilling their potential. This is a challenging goal, so we have adopted an agile approach which will allow us to respond quickly where needed and try out different approaches to help us test ideas, learn and grow what works.

Our priorities are:

- a) **Voice, leadership and access to decision-making power**
- b) **Access to skills and employment**
- c) **Faith based advocacy, interfaith and intercultural dialogue**
- d) **Community resilience**

Some of our activities are:

We have consolidated our work into four areas of activity:

- **The Women's Building** - to create a safe place in Bradford dedicated to and focusing on Muslim women's issues, where women (Muslims and non-Muslims) can come together and find their own confidence and strength; a space where they can access the tools and resources to create better lives for themselves, their family and their community. The building will be women led and governed; and will include the UK's first women governed mosque.
- **Daughters of Eve** - this is our core brand for learning, sharing and doing activities and services such as Women's Circle, Bradford Circle and other activities focusing on enabling Muslim women to share experiences and insights, whilst learning from their peers and others; and to utilise the learning to do more with their lives and in the community.
- **Curry Circle** – this is our soft entry point for local people (especially women) to engage in volunteer work and civic life, through helping to feed those in need. Going forward, due to demand from our service users, we are expanding from working with food poverty to other poverty related issues, such as 'period poverty'.
- **Think Tank Pilot Programme** – MWC will establish the critical importance of Muslim women with lived experience, and change how this is viewed and valued in policy and decision making at all levels. We aim to enrich and correct the knowledge landscape by ensuring that new relevant research is produced, contributing to building trust between communities and research institutes whilst giving them voice and creating opportunities for Muslim women to influence change. The evidence, recommendations and solutions generated by them will be presented to governments, donor institutions and the private sector demonstrating how they can create conditions that allow Muslim women to thrive.

All our work will continue to focus on supporting Muslim women, and being embedded within this community so that we are a sustained force for social change and critical to the current debate taking place about the role/place of Muslims in British society.

If you would like to learn more about our work or partner with us to empower women for the benefit of society contact us on 01274 223230 or directorsoffice@muslimwomenscouncil.org.uk

Please read on for some of our current projects

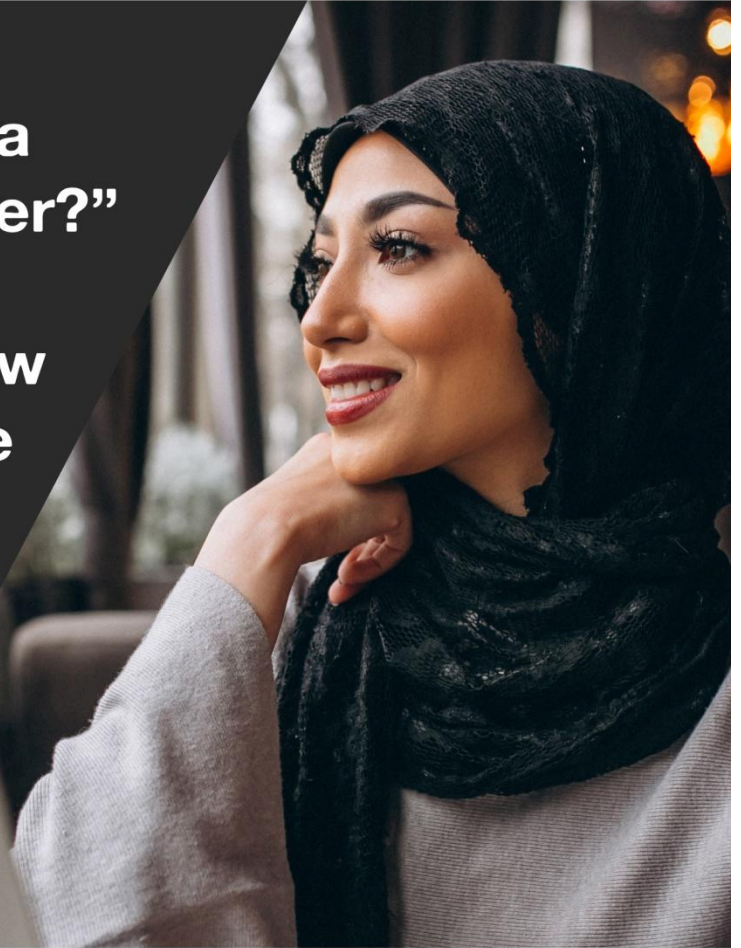
THINK-TANK PILOT



“Do you want to be a community influencer?”

“Want to change how women like YOU are seen and heard?”

Why not join us at MWC's programme where you will develop skills to



- Become more confident in articulating your views
- Learn basic research techniques
- Learn how to debate
- Develop critical thinking

MWC are offering a unique opportunity to Muslim women across the Bradford District to engage in the first pilot of its kind -take part and become community influencers on the issues that matter. The skills you develop will shape what research looks like in the future across our district. **The programme is free.**



FOR FURTHER INFORMATION CONTACT 01274 223230
TO BOOK ONTO OUR INFORMATION SESSION AT THE CARLISLE BUSINESS CENTRE, BRADFORD





AUNTIES NETWORK

INTERESTED IN JOINING THIS AMAZING GROUP OF LADIES?

ARE YOU READY TO TAKE ON THE CHALLENGE TO TALK ABOUT DIFFICULT SUBJECTS LIKE CHILD SEXUAL EXPLOITATION (CSE)?

WOULD YOU LIKE TO BE PART OF A FEMALE MOVEMENT THAT MAKES A REAL DIFFERENCE TO OUR COMMUNITIES?

THE 'AUNTIES NETWORK' ARE A VERY SPECIAL GROUP OF LADIES WHO ARE BREAKING THE CULTURE OF SILENCE AND OPENING UP THE CONVERSATION ABOUT CHILD SEXUAL EXPLOITATION WITHIN THEIR OWN INFORMAL NETWORKS

WE PROVIDE SUPPORT & TRAINING, ALL YOU NEED TO DO IS TALK TO YOUR FRIENDS AND FAMILY & PASS ON THESE VERY IMPORTANT MESSAGES.

JOIN US NOW- FOR MORE INFORMATION CONTACT MUSLIM WOMEN'S COUNCIL ON 01274 223230



FREE LEGAL ADVICE DROP IN FOR WOMEN

**CONFIDENTIAL ADVICE PROVIDED:
MATRIMONIAL LAW · FORCED MARRIAGE
CHILDREN · DOMESTIC VIOLENCE · RELATIONSHIP BREAKDOWN**

**DROP IN OR MAKE AN APPOINTMENT
STARTS 23RD JULY 2019 · EVERY TUESDAY 4PM-6PM**

**VENUE: LISTER SUITE, CARLISLE BUSINESS CENTRE
CARLISLE ROAD, BRADFORD, BD8 8BD**

CALL US: 01274 223230
DIRECTORSOFFICE@MUSLIMWOMENSCOUNCIL.ORG.UK



Stachiw Bashir Green
Solicitors





muslimwomenscouncil



MWC_bradford



**HELP US FEED
BRADFORD'S
MOST VULNERABLE**

**Your donation will help
us feed Bradford's
most disadvantaged**

£10 Feeds 5 People

£20 Feeds 10 People

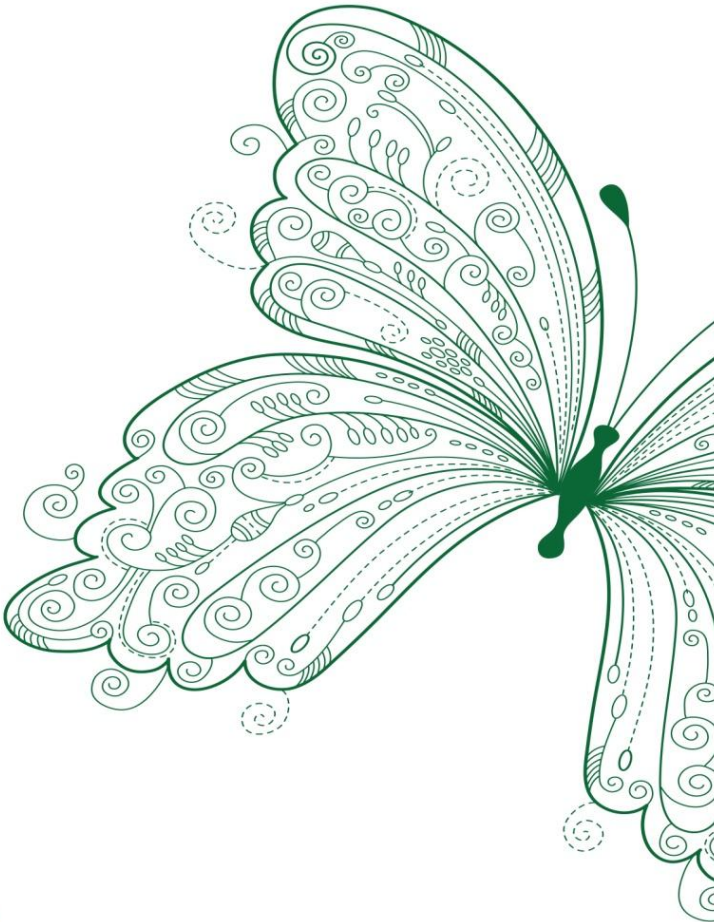
£60 Feeds 35 People

£100 Feeds 60 People

£150 Feeds 100 People

WWW.MUSLIMWOMENSCOUNCIL.ORG.UK/CURRYCIRCLE/





**MUSLIM WOMEN'S
COUNCIL**

Carlisle Business Centre, Lister Suite, 60 Carlisle Road, Bradford, BD8 8BD
www.muslimwomenscouncil.org.uk

Charity number 1158560 • Company number 7518555